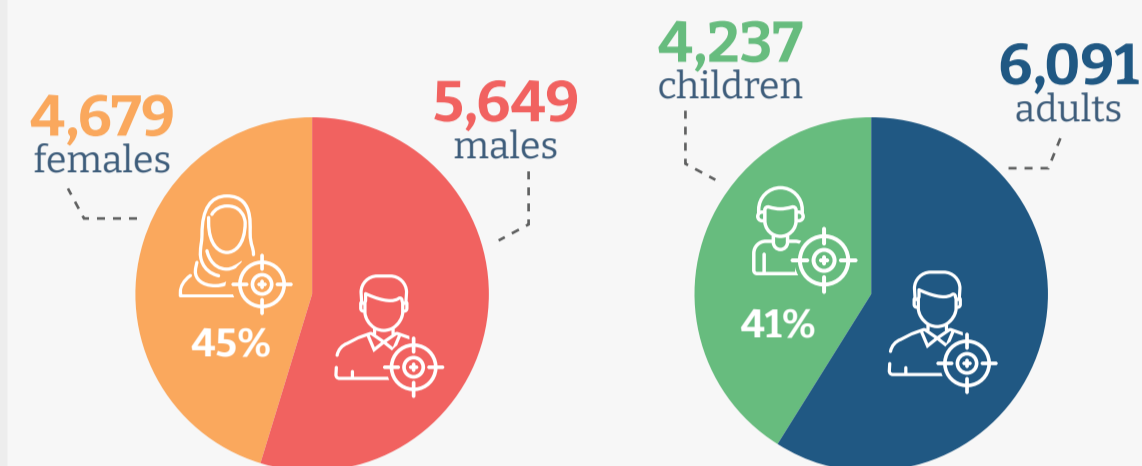


# A Month of War

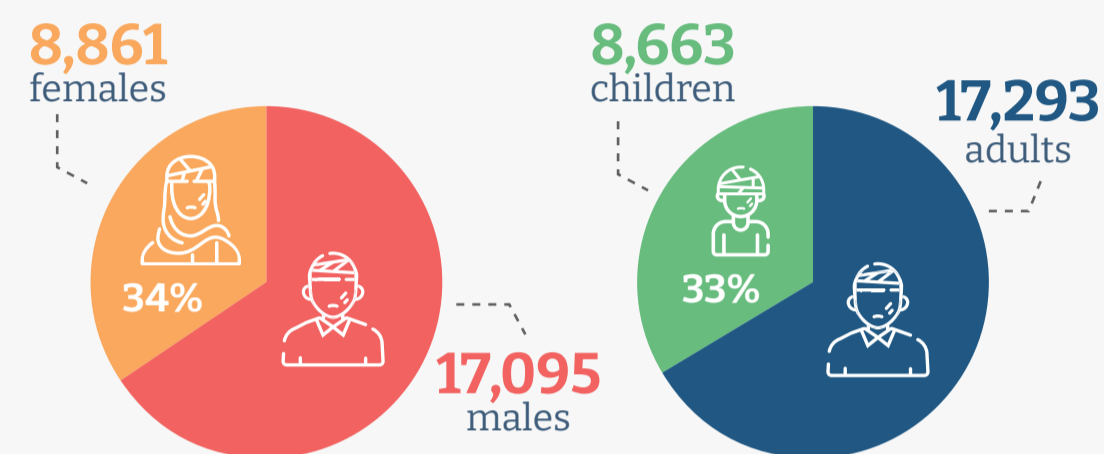
Update 6 November 2023

## in Gaza Strip

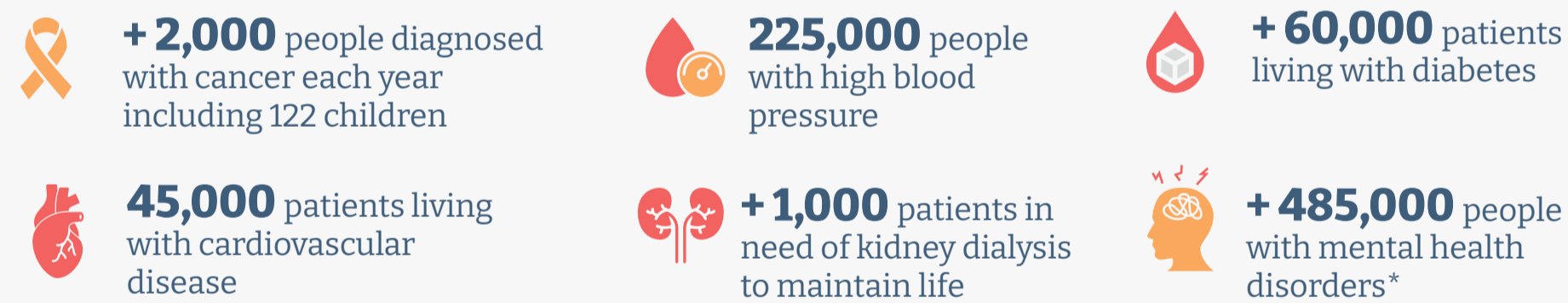
### 10,328 Fatalities



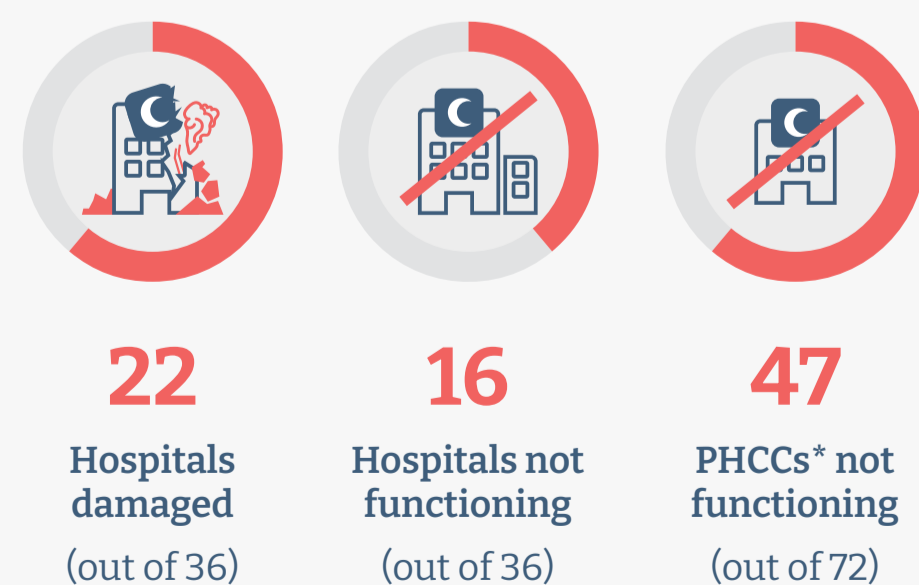
### 25,956 Injuries



### Long-term conditions in Gaza



### Health systems functionality



\* PHCC = primary health care centre

### 111 Attacks on Health Care



**~100** patients per day need access out of Gaza for health care

## in West Bank

**162** Fatalities



**2,300** Injuries



**127** Attacks on Health Care

**16** Health workers injured

**105** Ambulances affected

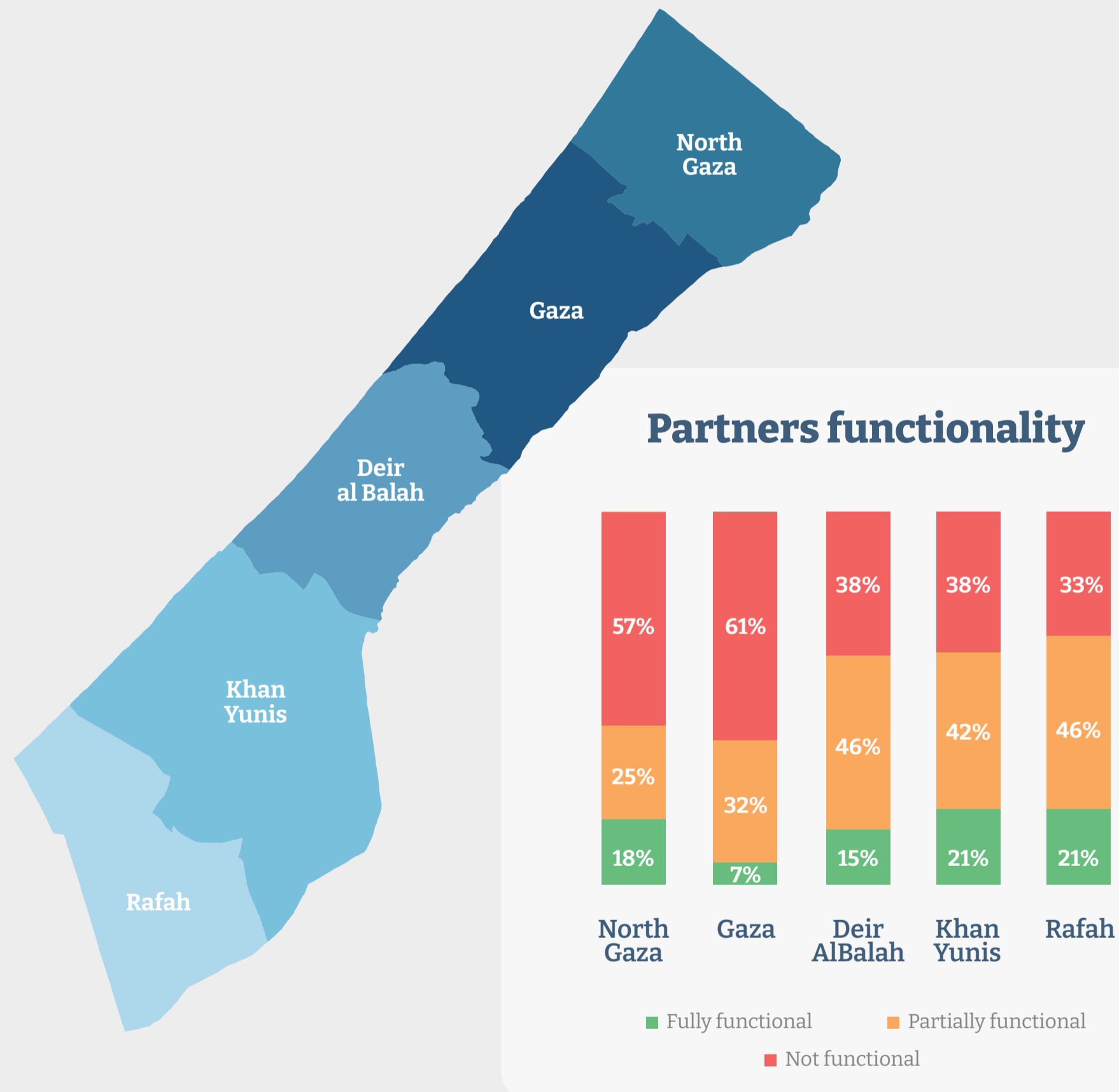
**29** communities in West Bank have no access to primary healthcare

**+270** patients cannot enter east Jerusalem & Israel to access their cancer treatments

**+5,000** Gaza workers and patient/companions stuck sheltering in West Bank.

# Health Cluster Partners Operational Challenges

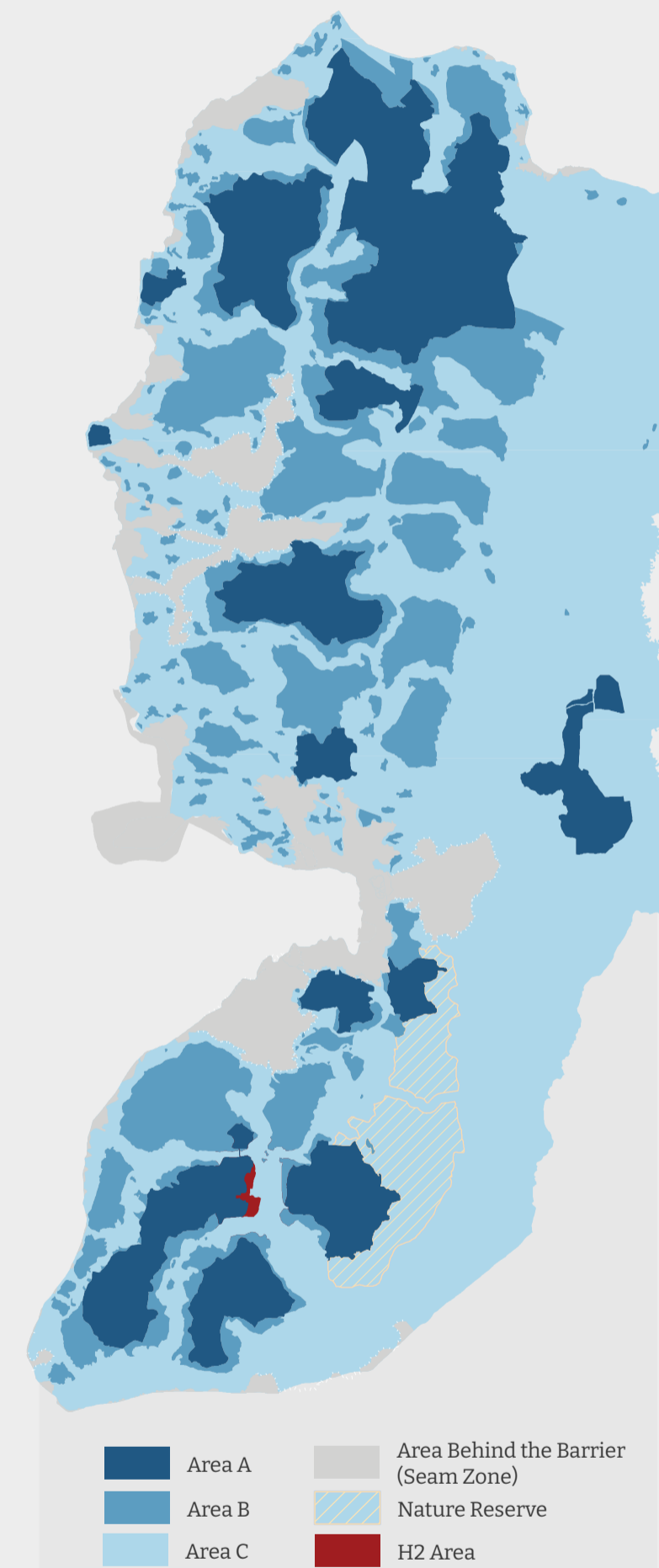
## in Gaza Strip



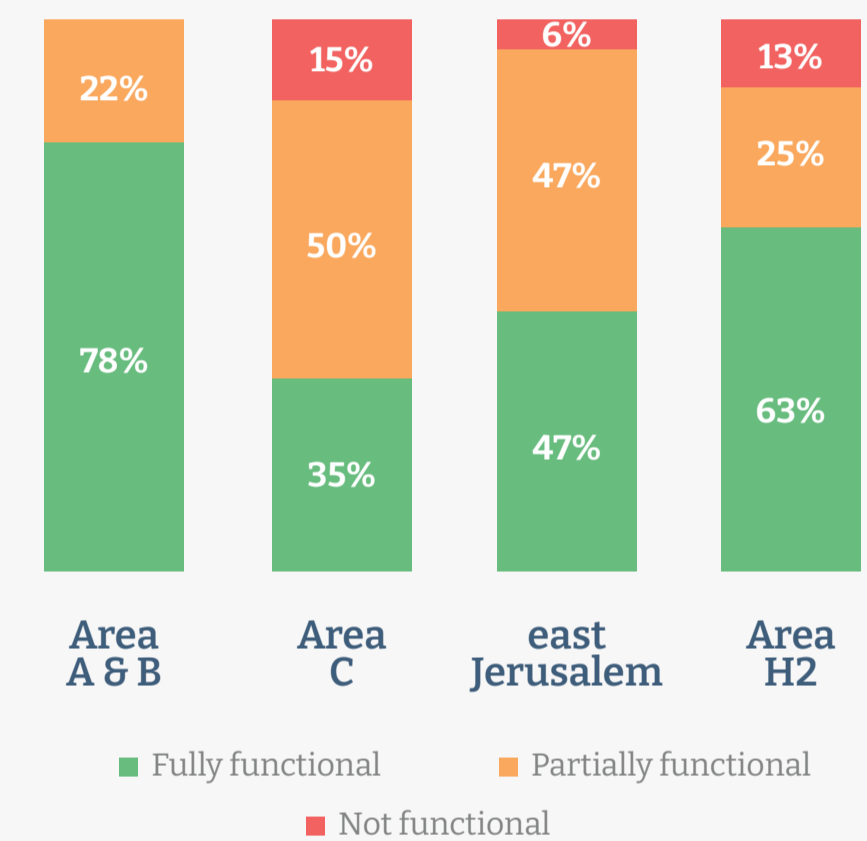
### Challenges

- Insecurity
- Medical supplies
- Displacements
- Fuel shortages
- Lack of access to locations in the north

## in West Bank



### Partners functionality



### Challenges

- Checkpoint closures and movement restrictions
- Increased military operations and settler violence
- Community displacements
- Permits not being renewed

# Health Cluster Partners Operational Response

## in Gaza Strip




**\$800K**  
worth prepositioned supplies released




**\$5.5M**  
procured locally and delivered supplies




**\$34.2M**  
donors funding commitments to date




Providing pre-hospital care through ambulance services




Providing surge staff to hospitals to support case management



Remote counselling (whenever network is available)



Provided fuel to key hospitals (when fuel was still available)



Mobile clinics to provide primary healthcare to internally displaced persons (IDP)


## in West Bank




**\$200K**  
worth prepositioned supplies released




**\$800K**  
donors funding commitments to date




Providing pre-hospital care through ambulance services



Strengthening the emergency departments at major hospitals




Providing primary healthcare and other health services to Gaza workers sheltering across the West Bank



Activated district-level emergency SRH services

\* SRH: Sexual and reproductive Health

## Planned Response




**\$227.7M**  
flash appeal funding requirement



**2.8M**  
people in need  
**2.2M** in Gaza **0.6M** in West Bank




**2.5M**  
people targeted  
**2.0M** in Gaza **0.5M** in West Bank



**Emergency and trauma care** of casualties, including procurement of needed supplies.



**Provide access to primary and secondary healthcare services** including management of Non-communicable diseases



**Provide multidisciplinary rehabilitation services** for the injured including limb reconstruction.



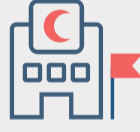
**Expand community access to sexual and reproductive services** including Gender-based violence




**Replenishment of depleted prepositioned supplies** for the management of casualties



**Prevent and respond to outbreak-prone diseases** including strengthening disease surveillance



**Establish 3 field hospitals** and deploy Emergency Medical Teams (EMTs)



**Provide psychological first aid** including for health workers and provision of psychotropic medications



**Support health facilities and ambulances** with fuel for 3 months



**Provide emergency nutrition interventions** for children under 5 and pregnant and lactating women



**Repair of partially damaged health facilities** to maintain services